

# Frozen Kingdom - Year 6 - Term 1



Who lives in the Polar regions?

## The World:

Everything north of the **equator** (including the **Tropic of Cancer**) is in the **northern hemisphere**.

Everything south of the **equator** (including the **Tropic of Capricorn**) is in the **southern hemisphere**.

## Time Zones:

**Greenwich Mean Time** (GMT) is the time set from Greenwich, London at the **Royal Observatory**.

Countries across the world are either ahead of GMT (eg. GMT+1) or behind GMT (eg. GMT-3)

## Biomes:

The world is divided into different **biomes** according to the **climate**. A biome can span countries and continents.

The **Arctic** is classified as a **tundra**. The **Antarctic** is a **polar desert**.

## Plants and Animals:

Plants and animals in polar regions have **adapted** to ensure that they survive in the harsh conditions.

**Polar bears** are only found in the **Arctic** whilst **penguins** are only found in the **Antarctic**.

## The Arctic:

The **Inuits** are **indigenous** to the **Arctic Circle**. The Arctic is not a continent but made up of several countries including: Norway, Sweden, Canada. One of the largest Inuit communities is in **Nunavik, Canada**.

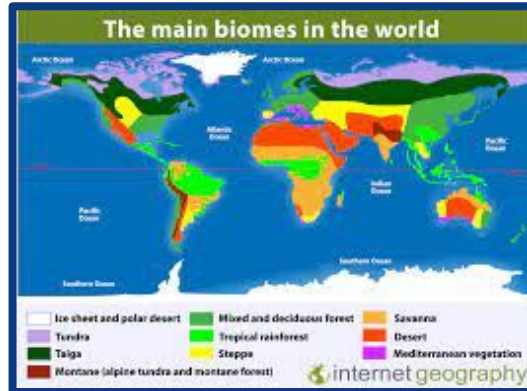
## The Antarctic:

There are no permanent residents in the Antarctic because conditions are too harsh. Antarctica is governed by the **Antarctic Treaty**. Scientists live in stations, the most renowned UK station is Halley VI

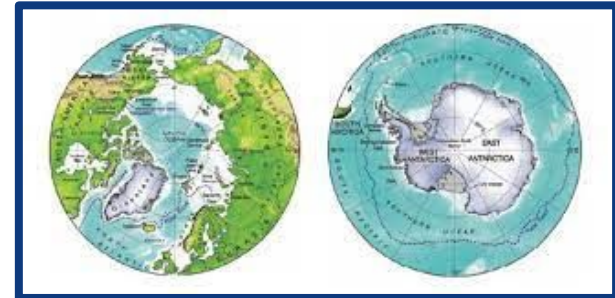
## What do you remember?



- The 7 continents: North America, South America, Antarctica, Europe, Asia, Africa, Oceania.
- The 5 oceans: Pacific, Atlantic, Southern, Arctic and Indian.
- Where is: the equator, North Pole and South Pole, tropics and meridian line on a globe?



## The Polar Regions



# Vocabulary



|                |   |
|----------------|---|
| Antarctic      | The South Polar region.   |
| Arctic         | The regions around the North Pole.  |
| Climate Change | The long-term shift in average weather patterns across the world.   |
| Expedition     | A journey undertaken by a group of people with a particular purpose, especially that of exploration, research, or war.  |
| GMT            | Greenwich Mean Time.  |
| Ice floe       | A sheet of floating ice.  |
| Ice shelf      | An ice shelf is a large floating platform of ice that forms where a glacier or ice sheet flows down to a coastline and onto the ocean surface.  |
| Indigenous     | Existing in a land from the earliest times or from before the arrival of colonists.   |
| Inuit          | A member of an indigenous people of Northern Canada and parts of Greenland and Alaska.  |
| Polar          | Relating to the North or South Pole.  |
| Polar Desert   | Extreme low temperatures and scarce rainfall constitutes a polar desert and inhibits plant life.  |
| Tundra         | A treeless plain especially of Arctic regions, having a permanently frozen layer below the surface soil and plant life made up mostly of mosses, lichens, herbs, and very small shrubs. |

## Countries in the Arctic Circle.

